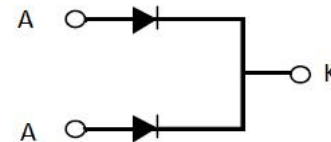
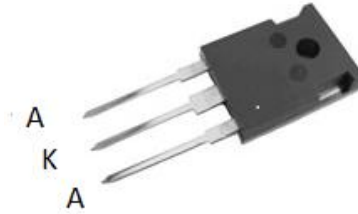


SCHOTTKY RECTIFIERS

Features:

- High ESD capacity
- High reliability
- High frequency operation
- Low forward voltage
- High surge capacity



Applications:

- Switching mode power supply
- High frequency inverter circuit
- Polarity protection circuit

Product Summary	
V_R	45 V
$I_{F(AV)}$	2*15A
T_j	125 °C
$V_F(max.)$	0.65V

Absolute Maximum Ratings			
Parameter	Symbol	Values	Units
Repetitive peak reverse voltage	V_{RRM}	45	V
Continuous forward current	$I_{F(AV)}$	30	A
Single pulse forward current	I_{FSM}	300	
Operating junction	T_j	125	°C
Storage temperatures	T_{stg}	-55 to +125	°C
Peak Repetitive Reverse Surge Current	I_{RRM}	5	A

Electrical characteristics (Ta=25°C unless otherwise specified)						
Parameter	Symbol	Test Conditions	Min	Typ.	Max.	Units
Breakdown voltage Blocking voltage	V_{BR} , V_R	$I_R=100\mu A$	45			V
Forward voltage (Per Diode)	V_F	$I_F=15 A$		0.55	0.65	
		$I_F=15 A, T_j=85^\circ C$		0.52	0.60	
Reverse leakage current(Per Diode)	I_R	$V_R=V_{RRM}$			120	μA
		$T_j=85^\circ C, V_R=45V$			30	mA

Thermal characteristics

Parameter	Symbol	Typ.	Units
Junction-to-Case	$R_{\theta JC}$	0.8	$^\circ C/W$

Electrical performance (typic)

