

## SCHOTTKY RECTIFIERS

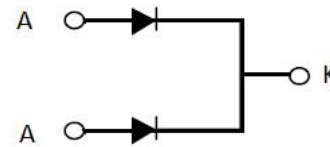
### Features:

- High ESD capacity
- High junction temperature capability
- High frequency operation
- Low leakage current
- High surge capacity



### Applications:

- Switching mode power supply
- High frequency inverter circuit
- Polarity protection circuit



Product Summary	
$V_R$	150 V
$I_{F(AV)}$	2*10A
$T_j$	150°C
$V_F(max.)$	1.1 V

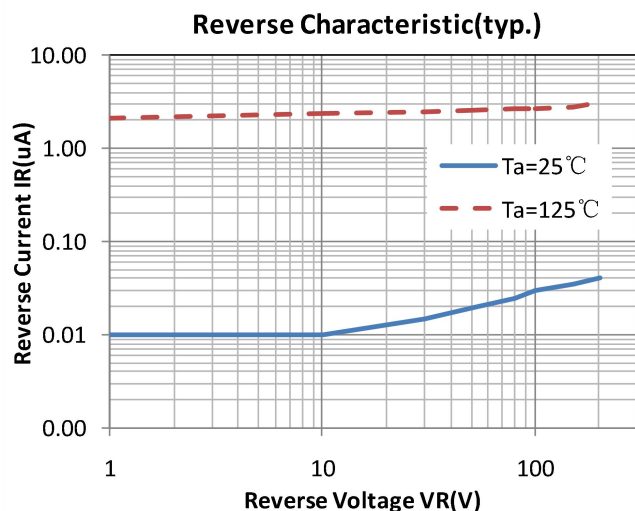
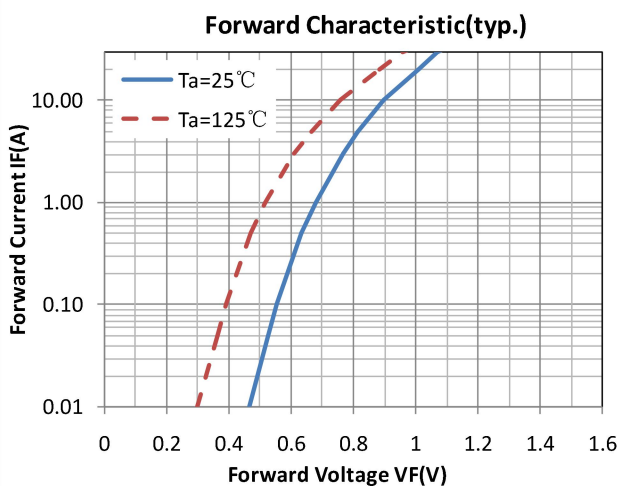
Absolute Maximum Ratings			
Parameter	Symbol	Values	Units
Repetitive peak reverse voltage	$V_{RRM}$	150	V
Continuous forward current	$I_{F(AV)}$	20	A
Single pulse forward current	$I_{FSM}$	100	
Operating junction	$T_j$	150	°C
Storage temperatures	$T_{stg}$	-55 to +150	°C
Peak Repetitive Reverse Surge Current	$I_{RRM}$	6	A

Electrical characteristics (Ta=25°C unless otherwise specified)						
Parameter	Symbol	Test Conditions	Min	Typ.	Max.	Units
Breakdown voltage Blocking voltage	$V_{BR}$ , $V_R$	$I_R=100\mu A$	150			V
Forward voltage (Per Diode)	$V_F$	$I_F=10A$		0.82	1.1	
		$I_F=10 A, T_j=85^\circ C$		0.75	1.0	
Reverse leakage current(Per Diode)	$I_R$	$V_R=V_{RRM}$			20	$\mu A$
		$T_j=125^\circ C, V_R=150V$			10	mA

### Thermal characteristics

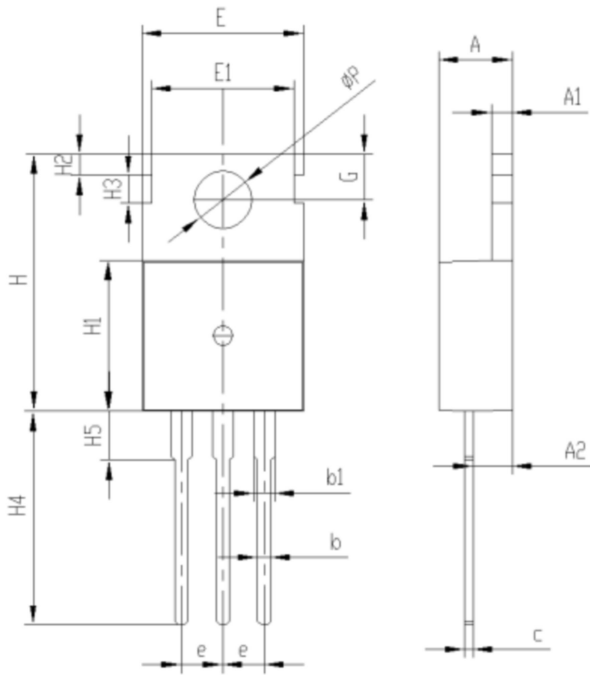
Parameter	Symbol	Typ.	Units
Junction-to-Case	$R_{\theta JC}$	3.0	$^\circ C/W$

### Electrical performance (typic)



## Package Information

### TO-220C PACKAGE



Symbol	Dimensions (millimeters)	
	Min.	Max.
A	4.30	4.70
A1	1.17	1.37
A2	2.20	2.60
b	0.60	1.00
b1	1.17	1.37
b2	1.90	2.30
c	0.30	0.70
e	2.34	2.74
E	9.70	10.1
E1	8.50	8.90
H	15.5	15.9
H1	9.00	9.40
H2	1.10	1.50
H3	1.50	1.90
H4	12.58	13.58
H5	2.80	3.20
G	2.60	3.00
$\Phi P$	3.40	3.80